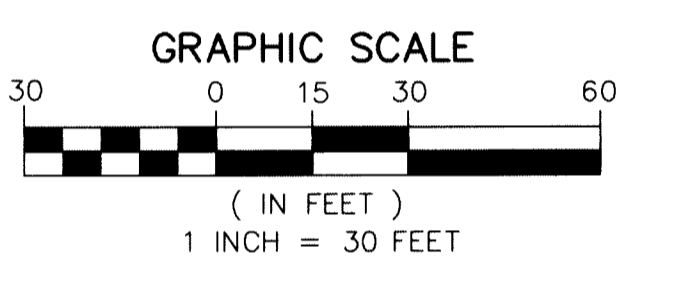
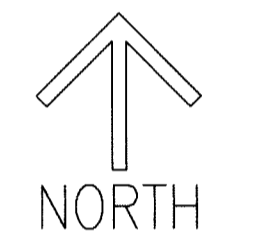


FONTANA TOWNHOMES

BEING A REPLAT OF A PORTION OF BLOCKS 9 AND 10, THE PALM BEACH FARMS CO. PLAT NO. 7, AS RECORDED IN PLAT BOOK 5, PAGE 72 OF THE PUBLIC RECORDS OF PALM BEACH COUNTY, FLORIDA, LYING IN SECTION 30, TOWNSHIP 44 SOUTH, RANGE 43 EAST, VILLAGE OF PALM SPRINGS, PALM BEACH COUNTY, FLORIDA

16

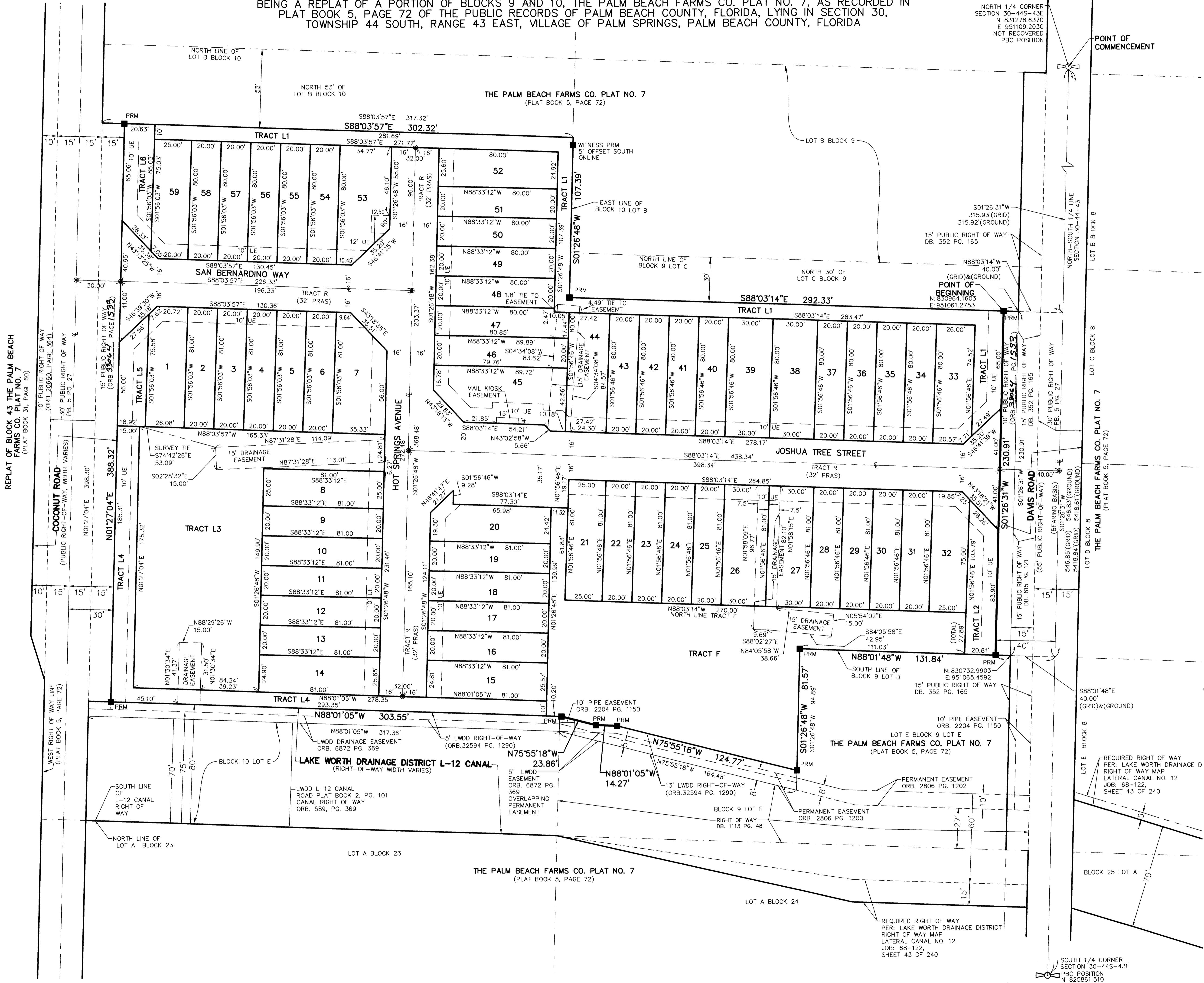
SHEET 2 OF 2



NOTES
COORDINATES, BEARINGS AND DISTANCES
 COORDINATES SHOWN ARE GRID
 DATUM = NAD 83 (1990 ADJUSTMENT)
 ZONE = FLORIDA EAST
 LINEAR UNIT = US SURVEY FEET
 COORDINATE SYSTEM 1983 STATE PLANE
 TRANSVERSE MERCATOR PROJECTION
 ALL DISTANCES ARE GRID, UNLESS OTHERWISE NOTED
 SCALE FACTOR = 1.000042828
 GROUND DISTANCE X SCALE FACTOR = GRID DISTANCE
 BEARINGS AS SHOWN HEREON ARE GRID DATUM
 NAD 83 (1990 ADJUSTMENT), FLORIDA EAST ZONE.

LEGEND/ABBREVIATIONS:
 C - CENTERLINE
 DB - DEED BOOK
 E - EASTING (WHEN USED WITH COORDINATES)
 FND - FOUND
 LWDD - LAKE WORTH DRAINAGE DISTRICT
 N - NORTHING (WHEN USED WITH COORDINATES)
 ORB. OR O.R.B. - OFFICIAL RECORD BOOK
 PBC - PALM BEACH COUNTY
 PG. - PAGE
 (PRAS) - PRIVATE RESIDENTIAL ACCESS STREET
 PCP - DENOTES PERMANENT CONTROL POINT
 NAIL AND METAL DISK STAMPED "PCP LB3591"
 PRM - DENOTES PERMANENT REFERENCE MONUMENT
 SET 4" x 4" x 24" CONCRETE MONUMENT WITH
 ALUMINUM DISK STAMPED "C&W PRM LB3591"
 Q - DENOTES QUARTER SECTION CORNER

THIS INSTRUMENT PREPARED BY
 DAVID P. LINDLEY
 OF
CAULFIELD & WHEELER, INC.
 SURVEYORS - ENGINEERS - PLANNERS
 7900 GLADES ROAD, SUITE 100
 BOCA RATON, FLORIDA 33434 - (561)392-1991
 CERTIFICATE OF AUTHORIZATION NO. LB3591



REPLAT OF BLOCK 43 THE PALM BEACH FARMS CO. PLAT NO. 7 (PLAT BOOK 31, PAGE 60)

COCONUT ROAD (PUBLIC RIGHT-OF-WAY, WIDTH VARIES) (ORB. 20660, PAGE 364) PB. 5 PG. 27

15' PUBLIC RIGHT OF WAY (ORB. 32624, PAGE 1533) PB. 5 PG. 27

30' PUBLIC RIGHT OF WAY (ORB. 20660, PAGE 364) PB. 5 PG. 27

15' DRAINAGE EASEMENT

10' PIPE EASEMENT ORB. 2204 PG. 1150

5' LWDD RIGHT-OF-WAY (ORB. 32594 PG. 1290)

13' LWDD RIGHT-OF-WAY (ORB. 32594 PG. 1290)

10' PIPE EASEMENT ORB. 2204 PG. 1150

15' DRAINAGE EASEMENT

15' PUBLIC RIGHT OF WAY DB. 352 PG. 165

15' PUBLIC RIGHT OF WAY DB. 352 PG. 165

15' PUBLIC RIGHT OF WAY DB. 352 PG. 165

15' PUBLIC RIGHT OF WAY DB. 352 PG. 165

15' PUBLIC RIGHT OF WAY DB. 352 PG. 165

15' PUBLIC RIGHT OF WAY DB. 352 PG. 165

15' PUBLIC RIGHT OF WAY DB. 352 PG. 165

15' PUBLIC RIGHT OF WAY DB. 352 PG. 165

15' PUBLIC RIGHT OF WAY DB. 352 PG. 165

15' PUBLIC RIGHT OF WAY DB. 352 PG. 165

15' PUBLIC RIGHT OF WAY DB. 352 PG. 165

15' PUBLIC RIGHT OF WAY DB. 352 PG. 165

15' PUBLIC RIGHT OF WAY DB. 352 PG. 165

15' PUBLIC RIGHT OF WAY DB. 352 PG. 165

15' PUBLIC RIGHT OF WAY DB. 352 PG. 165

15' PUBLIC RIGHT OF WAY DB. 352 PG. 165

15' PUBLIC RIGHT OF WAY DB. 352 PG. 165

15' PUBLIC RIGHT OF WAY DB. 352 PG. 165

15' PUBLIC RIGHT OF WAY DB. 352 PG. 165

15' PUBLIC RIGHT OF WAY DB. 352 PG. 165

15' PUBLIC RIGHT OF WAY DB. 352 PG. 165

15' PUBLIC RIGHT OF WAY DB. 352 PG. 165

15' PUBLIC RIGHT OF WAY DB. 352 PG. 165

15' PUBLIC RIGHT OF WAY DB. 352 PG. 165

15' PUBLIC RIGHT OF WAY DB. 352 PG. 165

15' PUBLIC RIGHT OF WAY DB. 352 PG. 165

15' PUBLIC RIGHT OF WAY DB. 352 PG. 165

15' PUBLIC RIGHT OF WAY DB. 352 PG. 165

15' PUBLIC RIGHT OF WAY DB. 352 PG. 165

15' PUBLIC RIGHT OF WAY DB. 352 PG. 165

15' PUBLIC RIGHT OF WAY DB. 352 PG. 165

15' PUBLIC RIGHT OF WAY DB. 352 PG. 165

15' PUBLIC RIGHT OF WAY DB. 352 PG. 165

15' PUBLIC RIGHT OF WAY DB. 352 PG. 165

15' PUBLIC RIGHT OF WAY DB. 352 PG. 165